



ORIGINAL RESEARCH ARTICLE

Preparation and preclinical study of [⁶⁸Ga]Ga-(Pip)-Nle-CycMSH_{hex}: Optimized production with an in-house ⁶⁸Ge/⁶⁸Ga generator

Sepideh Shafiei¹, Leyla Akbari², Arezoo Karimian³, Samaneh Zolghadri¹, Mostafa Erfani¹, Azadeh Mikaeili¹, Zhila Fallah¹, Hassan Yousefnia¹

¹Radiation Application Research School, Nuclear Science and Technology Research Institute, Tehran, Iran

²Nuclear Engineering Department, Shiraz University, Shiraz, Iran

³Faculty of Engineering, Science and Research Branch, Islamic Azad University, Tehran, Iran

ARTICLE INFO

Article History:

Received: 04 December 2023

Revised: 20 February 2024

Accepted: 21 February 2024

Published Online: 27 March 2024

Keyword:

Melanoma

[⁶⁸Ga]Ga-CCZ01048

α-MSH

PET

Biodistribution

*Corresponding Author:

Dr. Hassan Yousefnia

Address: Radiation Application Research School, Nuclear Science and Technology Research Institute, Tehran, Iran

Email: hyousefnia@aeoi.org.ir

ABSTRACT

Introduction: The early diagnosis of melanoma is crucial for treatment and management of this aggressive malignancy. The present study describes the preparation and preclinical evaluation of ⁶⁸Ga-radiolabeled DOTA-4-amino-(l-carboxymethyl) piperidine (Pip)-Nle-cysMSH_{hex} peptide ([⁶⁸Ga]Ga-CCZ01048) as a potential aide for PET imaging and early diagnosis of malignant melanoma.

Methods: Various parameters were assessed to optimize the final preparation processes. The radiochemical purity of the final complex was checked using RTLC and HPLC methods. The stability of the radiolabeled complex was studied at 15, 30, 60 and 120-min post-injection. The partition coefficient was also studied. Cellular studies of the labeled peptide were measured using B16F10 cells at different post-treatment intervals. The biodistribution of the labeled compound was evaluated using normal and tumor-bearing mice.

Results: [⁶⁸Ga]Ga-(Pip)-Nle-cysMSH_{hex} radiolabeled complex was prepared with a specific activity of 118.4 TBq/mmol and radiochemical purity > 99% at optimized conditions. The results of stability studies show that the radiolabeled compound is stable in PBS buffer and human serum after 120 min. The cellular studies demonstrated that a binding affinity of [⁶⁸Ga]Ga-(Pip)-Nle-cysMSH_{hex} on B16F10 cells and the internalization of the complex increased from about 31% in 30 min to 62% in 240 min post-treatment. The biodistribution studies showed excretion of major portion of the tracer through the kidneys. The remainder of the tracer mostly accumulated at the tumor site. No significant uptake in non-target organs was observed at any interval following injection.

Conclusion: The [⁶⁸Ga]Ga-(Pip)-Nle-cysMSH_{hex} radiolabeled complex has the potential as a PET imaging agent for evaluation of metastatic malignant melanoma.

Use your device to scan and read the article online



How to cite this article: Shafiei S, Akbari L, Karimian A, Zolghadri S, Erfani M, Mikaeili A, Fallah Z, Yousefnia H. Preparation and preclinical study of [⁶⁸Ga]Ga-(Pip)-Nle-CycMSH_{hex}: Optimized production with an in-house ⁶⁸Ge/⁶⁸Ga generator. Iran J Nucl Med. 2024;32(2):157-164.



<https://doi.org/10.22034/IRJNM.2024.129486.1590>

INTRODUCTION

Melanoma results from Genetic mutations in melanocytes. This disease is highly associated with genetic predisposition and environmental stressors [1]. Malignant melanoma has the highest death rates of skin cancer because it is aggressive, has high metastatic potential, and is resistant to cytotoxic agents [2-5]. Although melanoma accounts for about 1% of all skin cancer types, it is responsible for more than 50% of all skin cancer deaths [6]. According to the stage of disease, various therapies such as surgical resection, chemotherapy, radiotherapy, photodynamic therapy, immunotherapy and targeted therapy are employed [7]. The crucial keys to managing melanoma are early diagnosis and accurate staging of the disease [8, 9]. Positron emission tomography (PET) is a powerful technique for such purpose [4, 10, 11].

The melanocortin type 1 receptor (MC1R) belonging to the G protein-coupled receptors family is overexpressed on the surface of melanoma metastases [12, 13]. Therefore, this protein is the most promising target for melanoma imaging [14]. It is found that α -melanocyte stimulating hormone (α -MSH) with the minimal sequence of His-Phe-Arg-Trp selectivity bind the MC1R with limitation of a short half-life in humans [15]. Therefore, with this core sequence, different linear and cyclized α -MSH peptides have been designed to improve its stability and receptor binding affinity [2]. The results indicate that cyclic α -MSH peptides are more suited for the MC1R-binding pocket than linear peptides and improve binding affinities [16, 17]. Significant efforts have been made to modify cyclized α -MSH analogs to enhance tumor uptake and provide high contrast between tumor and normal tissue with PET imaging [18-20].

The common radiopharmaceutical [¹⁸F]FDG used for PET/CT has limitation in detecting small distant metastatic lesion in malignant melanoma [21]. Therefore, radiopharmaceutical-binding receptors have been developed for more specific imaging. The α -MSH peptides labeled with various positron emitting radioisotopes such as ⁶⁴Cu [22], ¹⁸F [8], ⁴⁴Sc [23] and ⁶⁸Ga [24] are used to assess the diagnostic efficacy of these radiopharmaceuticals in melanoma tumors.

Among the emitters, ⁶⁸Ga with a short half-life (68 min) and high yield of positron emission (88%), is an ideal radionuclide for PET imaging. Since ⁶⁸Ga can be obtained by the ⁶⁸Ge/⁶⁸Ga generator, it is conveniently available and relatively cheap radioisotope [25]. The development of small peptides labeled easily with ⁶⁸Ga, allows it to be

readily converted into radiopharmaceuticals for PET imaging. ⁶⁸Ga is also has a potential to be employed in combination with ¹⁷⁷Lu as a theranostic radiopharmaceutical [26]. Therefore, there is increasing interest in using ⁶⁸Ga in nuclear medicine.

Skin cancer ranks as the most common cancer in Iran [27]. It is estimated that skin cancer accounts for 7000 new cases every year in Iran [28]. According to studies, men have a higher risk of skin cancer than women. Despite this, women have a higher mortality rate than men [29]. Non-melanoma skin cancer, especially Basal Cell Carcinoma (BCC), is the most common type of skin cancer in the country. Still a study found that BCC is declining, while Squamous Cell Carcinoma (SCC) and melanoma are on the rise [28, 30]. It is estimated that skin cancer is responsible for approximately 15% of all malignancies in Iran [31]. Since metastatic melanoma is resistant to current common therapies, the best way for a cure is early melanoma tumor diagnosis and prompt surgical removal. In fact, the early diagnosis of the cancer can significantly affect the timely treatment and overall patient survival. Therefore, development of a novel PET radiopharmaceutical for early diagnosis and management of melanoma is a research priority in our country.

The special physical characteristics of ⁶⁸Ga and its availability in the form of ⁶⁸Ge/⁶⁸Ga generator make the investigators enthuse in developing novel ⁶⁸Ga-based radiopharmaceuticals. The ⁶⁸Ge/⁶⁸Ga generator production has been well-established in the country and several new radiolabeled compounds have been developed in recent years [32-34]. The malignant melanoma prevalence is high in our country. The cyclized α -MSH analogues has shown high potential to target MC1R overexpressed in metastatic malignant melanoma such as the recently introduced ⁶⁸Ga-(Pip)-Nle-CycMSH_{hex} (Figure 1) [24]. This study aimed to develop [⁶⁸Ga]Ga-CCZ01048 obtained from an in-house ⁶⁸Ge/⁶⁸Ga generator as a high-potential agent for PET imaging of malignant melanoma. Accordingly, CCZ01048 was successfully labeled with ⁶⁸Ga in optimized conditions. The stability of the radiopharmaceutical was checked in PBS buffer and human serum. The partition coefficient and the cellular study of the final complex were measured. Finally, the biodistribution of the complex was studied in normal and tumor-bearing mice at different intervals.

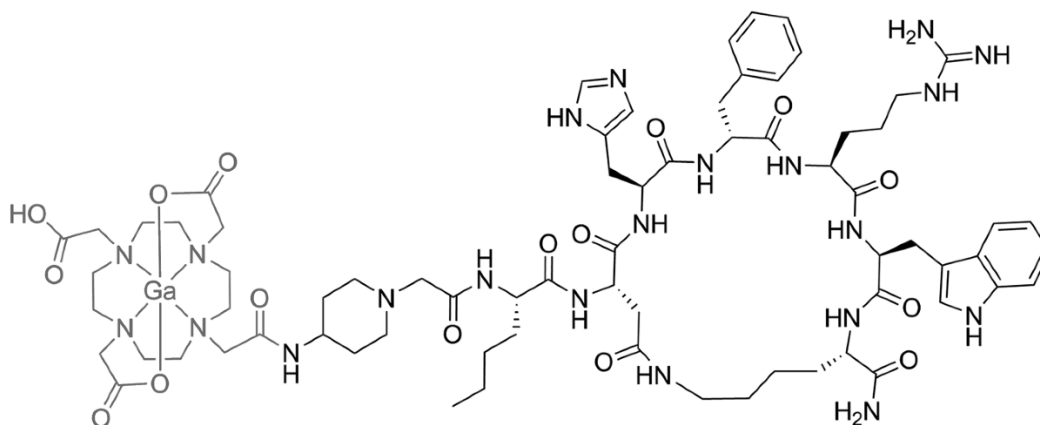


Figure 1. Chemical structure of $[^{68}\text{Ga}]\text{Ga-CCZ01048}$

METHODS

A prototype in-house $^{68}\text{Ge}/^{68}\text{Ga}$ generator with a nominal activity of 1480 MBq, developed at Pars Isotope Co. (Tehran, Iran), was used as a source of ^{68}Ga . CCZ01048 peptide was prepared from the MedChemExpress LLC (USA). B16F10 murine melanoma cells were obtained from the Pasteur Institute (Iran). All other chemical reagents were purchased from Sigma Aldrich Chemical Co. (UK). The radiochemical purity of the radiolabeled complex was checked using high-performance liquid chromatography (HPLC) method. A C_{18} ODS column dimensions of 100 mm \times 4.6 mm filled with 5 μm particles was used for the analysis. The activity of the samples was measured by a p-type coaxial high-purity germanium (HPGe) detector (model: EGPC 80–200 R) coupled with a multichannel analyzer system. The 511 keV peak for ^{68}Ga was the basis for the calculations. Animal studies were performed following the United Kingdom Biological Council's Guidelines on the Use of Living Animals in Scientific Investigations, second edition.

Preparation and quality control of radiolabeled CCZ01048

To prepare the radiolabeled compound in optimized conditions, several experiments were done. While the pH of the reaction was changed from 2.8 to 4, other parameters were kept constant. At the best pH, the reaction temperature (50–100 $^{\circ}\text{C}$) and peptide concentration (10–30 μg) were altered. To find the best reaction time, the radiochemical purity of the radiolabeled compound was checked in different intervals (5–30 min). Finally, in optimized conditions, 3 mL ^{68}Ga was obtained in the form of $^{68}\text{GaCl}_3$ with activity of about 1260 MBq by milking from $^{68}\text{Ge}/^{68}\text{Ga}$ generator, with eluting with 0.1 M

HCl. The pH of the eluate was adjusted to about 3 by adding 130 mg HEPES to the reaction vial. Then, 15 μg of CCZ01048 (1 mg/mL) was added to the reaction and heated at 95 $^{\circ}\text{C}$ for 15 min. The solution was transferred through a C_{18} Sep-Pak cartridge preconditioned with 5 mL ethanol and 10 mL ultra-pure water, respectively. The cartridge was then washed with 2 mL ethanol and 8 mL saline. The product was filtered through a 0.22 μm Millipore filter. The radiochemical purity was determined by RTLC and HPLC methods. For radiochemical purity evaluation with RTLC, the methanol:saline (5:1) mixture, and Whatman No.2 paper were used as the mobile and stationary phases, respectively. The HPLC was done with the following gradient: A: Ultrapure water + 1% TFA and, B: Acetonitrile, with a flow rate of 2.6 $\text{mL}\cdot\text{min}^{-1}$ using gradient-elution: 0–3 min, A: 100%, B: 0%; 3–10 min, A: 50%, B: 50%; 10–15 min, A: 0%, B: 100%.

Stability tests

The stability of the final radiolabeled complex was examined at room temperature and in PBS buffer (4 $^{\circ}\text{C}$) at the specified time intervals (15, 30, 60, and 120 min). Furthermore, for assessing stability in human serum, a volume of 500 μL of newly obtained serum was introduced to a specimen of the substance. The mixture was then maintained at 37 $^{\circ}\text{C}$ for approximately 120 min. Over this duration, the radiochemical purity was analyzed using the RTLC method.

Partition coefficient

Partition coefficient ($\log P$) of $[^{68}\text{Ga}]\text{Ga-CCZ01048}$ was calculated followed by the determination of P (P = the ratio of specific activities of the organic and aqueous phases). 1 mL of 1-octanol and 1 mL of isotonic acetate-buffered saline (pH = 7) containing approximately 3.7 MBq of the radiolabeled complex were mixed. The mixture

was vortexed for 3 min and left for 5 min. Following centrifugation at >1200 g for 5 min, 50 μ L was removed from each phase and counted in an automatic well counter. A 500 μ L sample of the octanol phase from the former partitioning was repartitioned two to three times with fresh buffer to ensure that traces of hydrophilic impurities did not influence the calculated P values. The reported log P values are the average of the second and third extractions from three to four independent measurements.

Binding affinity

A test assessed the binding affinity of [⁶⁸Ga]Ga-CCZ01048, following established procedures with minor modifications [35]. To outline the process briefly, approximately 0.8×10^6 of B16F10 cells, a mouse melanoma cell line, were seeded per well in a 6-well plate and left to settle overnight in a complete culture medium within an incubator. Subsequently, after 24 hours, the culture medium was removed, and the cells underwent washing, followed by incubation with freshly prepared culture medium for 1 h at 37°C.

The plates were then cooled on ice for 30 min, and various concentrations (ranging from 1 to 100 nM) of [⁶⁸Ga]Ga-CCZ01048 were introduced to a PBS buffer (pH = 7.4). The evaluation of non-specific binding of the radiolabeled peptide took place in the presence of 1 μ M of non-radioactive peptide for 30 min at 37 °C. Following this, the cells were re-washed with ice-cold PBS. Subsequently, the cells were collected, and the amount of bound activity was quantified using a gamma counter.

Internalization

Research on internalization involved estimating the rate at which the radiolabeled peptide entered the mouse melanoma cells, was performed according published literature with slight modification [35]. In summary, approximately 1×10^5 cells were placed in each well of the 6-well plates and left to incubate for roughly 24h in a CO₂ incubator. Subsequently, [⁶⁸Ga]Ga-CCZ01048 (2.5 pmol) was introduced into each well and incubated for 30, 60, 120, 240, and 360 minutes at 37 °C.

The culture medium was eliminated after incubation, and the cells underwent washing. They were then subjected to two 5-min incubations with 1 mL of glycine buffer to dissociate any radiolabeled peptide attached to the cell surface, followed by two rinses with ice-cold PBS. Finally, 1mL of a 1N NaOH solution was added to the wells to displace the culture medium and quantify the internally absorbed activity. A gamma counter was utilized to measure both the

portion of the radiolabeled peptide bound to the cell surface and the internalized segment.

Tumor implementation

Animal experiments were conducted in compliance with our institution's guidelines and adherence to commonly accepted protocols governing such research. Female C57 mice, aged six weeks obtained from the Pasteur Institute (Iran), were employed in the biodistribution investigation. A 50 μ L suspension of B16F10 cells (consisting of 1×10^7 cells) was prepared and then subcutaneously injected into the left shoulder of each mouse. Tumors were observed to develop approximately ten days after the injection.

Biodistribution studies

100 μ L of the final [⁶⁸Ga]Ga-CCZ01048 solution with about 5MBq radioactivity was administered intravenously via the tail vein in mice. By counting the 1 mL syringe before and after the injection in a dose calibrator with fixed geometry, the total amount of radioactivity injected in each animal was measured. The biodistribution of the solution among tissues was determined by sacrificing three mice by CO₂ asphyxiation at each particular time interval (15, 30, 60, and 120 min) after injection. Blood samples were taken immediately after the killing. The samples from organs of interest were removed, weighed, and rinsed with normal saline. Their activities were determined with a p-type coaxial HPGe detector coupled with a multichannel analyzer. The biodistribution of [⁶⁸Ga]Ga-CCZ01048 in various organs was presented as percentage injected dose per gram (%ID/g, mean \pm SD) which is calculated by dividing the activity amount of each tissue to the decay-corrected injected activity and the mass of each organ.

Statistical analysis

All experiments were repeated at least three times, and all values were expressed as mean \pm standard deviation (Mean \pm SD). The data were compared using Student's T-test. P < 0.05 was considered statistically significant.

RESULTS

Preparation and quality control of radiolabeled CCZ01048

The radiolabeled compound was prepared with specific activity of 118.4 TBq/mmol at optimized condition. The radiochemical purity of [⁶⁸Ga]Ga-CCZ01048 was checked by RTLC and HPLC methods, demonstrating a purity >99% (Figures 2 and 3).

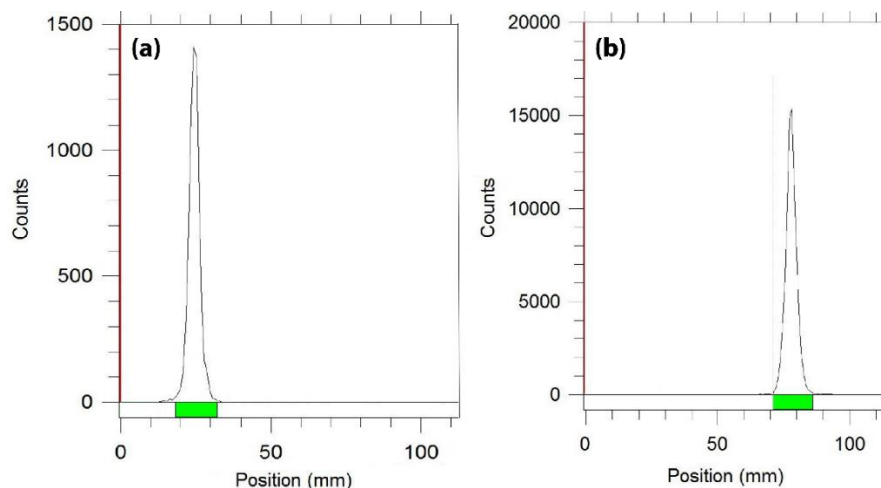


Figure 2. RTLC chromatogram of $[^{68}\text{Ga}]\text{GaCl}_3$ (a), and $[^{68}\text{Ga}]\text{Ga-CCZ01048}$ (b) using methanol:saline (5:1) mixture and Whatman No.2 paper

Stability tests

The stability of the final radiolabeled compound was studied after incubation for 120 min at room temperature, in PBS buffer (4°C), and human blood serum (37°C), showing the radiochemical purity of $94.5\% \pm 2.1\%$, $96.1\% \pm 1.2\%$, and $95.7\% \pm 2.3\%$, respectively.

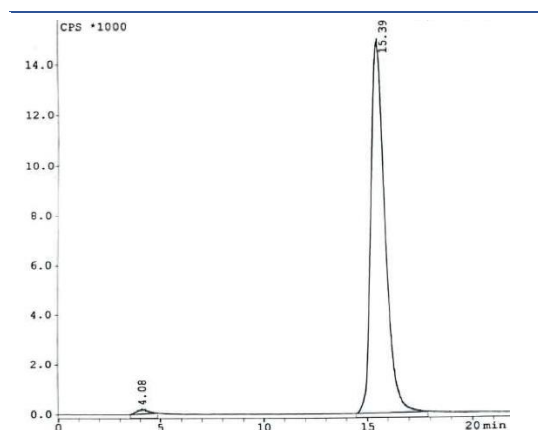


Figure 3. HPLC chromatogram of $[^{68}\text{Ga}]\text{Ga-CCZ01048}$

Partition coefficient

The partition coefficient was calculated by dividing the counts in the octanol phase by those in the buffer, and the results were expressed as Log P. The average value for $[^{68}\text{Ga}]\text{Ga-CCZ01048}$ was -2.31 ± 0.08 .

Cellular studies

The total concentration of MC1Rs expressed on B16F10 cells (B_{max}) and the dissociation constant (K_d) were measured (Figure 4). The saturation binding curve was drawn for $[^{68}\text{Ga}]\text{Ga-CCZ01048}$, and the K_d value was determined as

0.74 ± 0.13 nM. The internalization rate of $[^{68}\text{Ga}]\text{Ga-CCZ01048}$ was estimated on B16F10 cells at different intervals post-treatment. The results showed that the internalization increased from about 31% (30 min) to 62% (240 min) post-treatment (Figure 5).

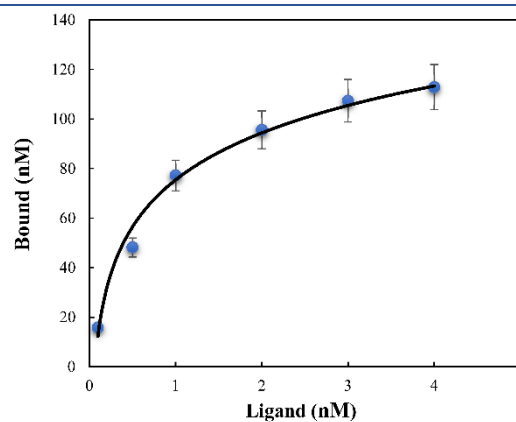


Figure 4. Saturation binding curve for $[^{68}\text{Ga}]\text{Ga-CCZ01048}$

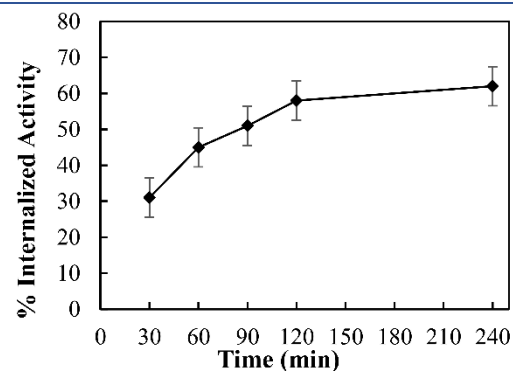


Figure 5. Percentage of internalized activity of $[^{68}\text{Ga}]\text{Ga-CCZ01048}$ in B16F10 cells

Biodistribution studies

Biodistribution of [⁶⁸Ga]GaCl₃ and the radiolabeled compound in the normal mice was investigated at 15-, 30-, 60-, and 120-min post-injection. The % ID/g for each organ after injection of [⁶⁸Ga]GaCl₃ and [⁶⁸Ga]Ga-CCZ01048 is indicated in Figures 6 and 7, respectively.

The biodistribution of [⁶⁸Ga]Ga-CCZ01048 in tumor-bearing mice was studied at 30-, 60- and 120-min post-injection (Figure 8).

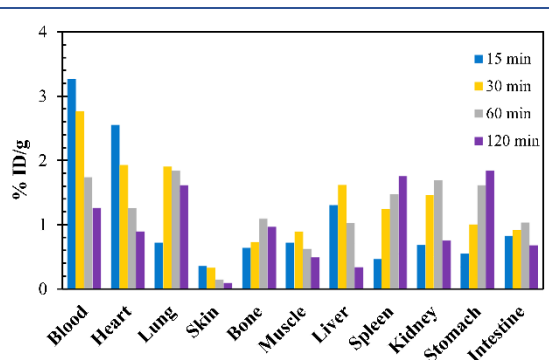


Figure 6. Biodistribution of [⁶⁸Ga]GaCl₃ in normal mice (n = 3)

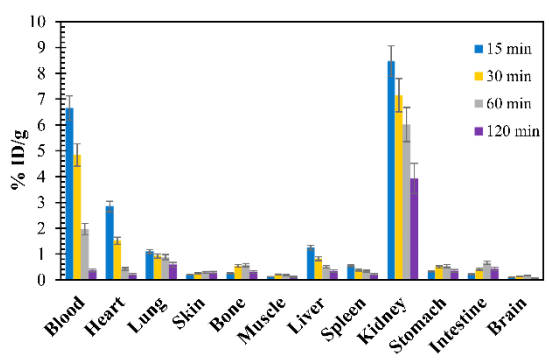


Figure 7. Biodistribution of [⁶⁸Ga]Ga-CCZ01048 in normal mice (n = 3)

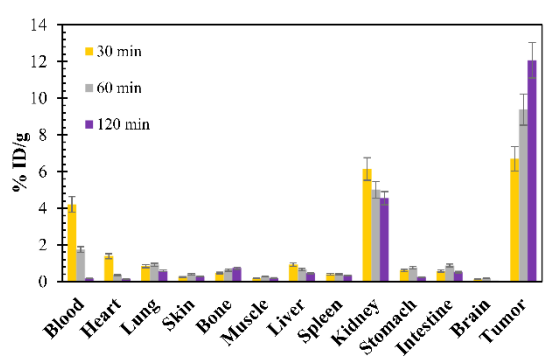


Figure 8. Biodistribution of [⁶⁸Ga]Ga-CCZ01048 in tumor-bearing mice (n = 3)

DISCUSSION

In this study, due to the various advantages of PET over single photon emission computed tomography (SPECT) images, [⁶⁸Ga]Ga-CCZ01048 radiolabeled complex was prepared with radiochemical purity of greater than 99% and specific activity of 118.4 TBq/mmol at optimized condition using an in-house ⁶⁸Ge/⁶⁸Ga generator. The study proved that this radiopharmaceutical is highly stable in PBS and human blood serum. The binding affinity study of the complex on the B16F10 cells showed high in vitro binding of the complex to the cells overexpressed MC1Rs with the K_d value of 0.74±0.13 nM. Also, the internalization studies showed that 62% of the bound activity is internalized to the cells after 240 min post-treatment.

The biodistribution pattern of [⁶⁸Ga]GaCl₃ is entirely different from that of [⁶⁸Ga]Ga-CCZ01048. The accumulation of [⁶⁸Ga]GaCl₃ and [⁶⁸Ga]Ga-CCZ01048 species in main organs are compared in Figure 9. Although, both [⁶⁸Ga]GaCl₃ and [⁶⁸Ga]Ga-CCZ01048 are eliminated fast from the blood circulation, the blood removal of the prepared radiolabeled complex occurs more quickly reaching to nondetectable level after about 2-hour post-injection. The muscle uptake of [⁶⁸Ga]GaCl₃ was much higher compared to the uptake of [⁶⁸Ga]Ga-CCZ01048 also the [⁶⁸Ga]GaCl₃ demonstrated higher gastric uptake. However, the renal uptake of the radiolabeled complex was much higher than those of [⁶⁸Ga]GaCl₃ at all-time intervals. The ⁶⁸Ga was mainly excreted from the gastrointestinal tract (GIT) while the radiolabeled peptide was principally excreted from the urinary tract due to the strong hydrophilic nature of the complex (Log P = -2.31±0.08). The water solubility of the radiocomplex leads to less unwanted non-target tissue uptake and faster renal washout.

The biodistribution of [⁶⁸Ga]Ga-CCZ01048 in tumor-bearing mice showed increasing tumor uptake over time reaching to maximum level at 120-min post-injection. The target-to-non-target uptake ratios after 30, 60, and 120 min of [⁶⁸Ga]Ga-CCZ01048 are presented in Table 1.

Table 1. Tumor to non-target uptake ratios at 30-, 60-, and 120-min post-injection

	30 min	60 min	120 min
Tumor/Blood	1.6±0.2	5.3±0.7	72.2±8.7
Tumor/Muscle	36.0±5.1	32.6±4.1	58.6±6.6
Tumor/kidney	1.1±0.1	1.9±0.3	2.7±0.3

Tumor uptake of $[^{68}\text{Ga}]\text{Ga-CCZ01048}$ increased, while the %ID/g of kidney, muscle, and blood decreased during the study. Therefore, the tumor to kidney, muscle, and blood ratios increased over time. The low blood concentration of $[^{68}\text{Ga}]\text{Ga-CCZ01048}$ after 120 min indicates the rapid clearance of the compound from the circulation. The considerable value of tumor to non-target uptake ratios after injection of $[^{68}\text{Ga}]\text{Ga-}$

CCZ01048 introduces this radiolabeled compound as a promising agent for PET imaging of malignant melanoma. However, this study could be strengthened using a variety of the MC1R overexpressing cells for cellular works, increasing the number of tumor-bearing mice for the animal studies as well as increasing the number of animal PET imaging procedures, not easily accessible in this survey hence a limitation of the study.

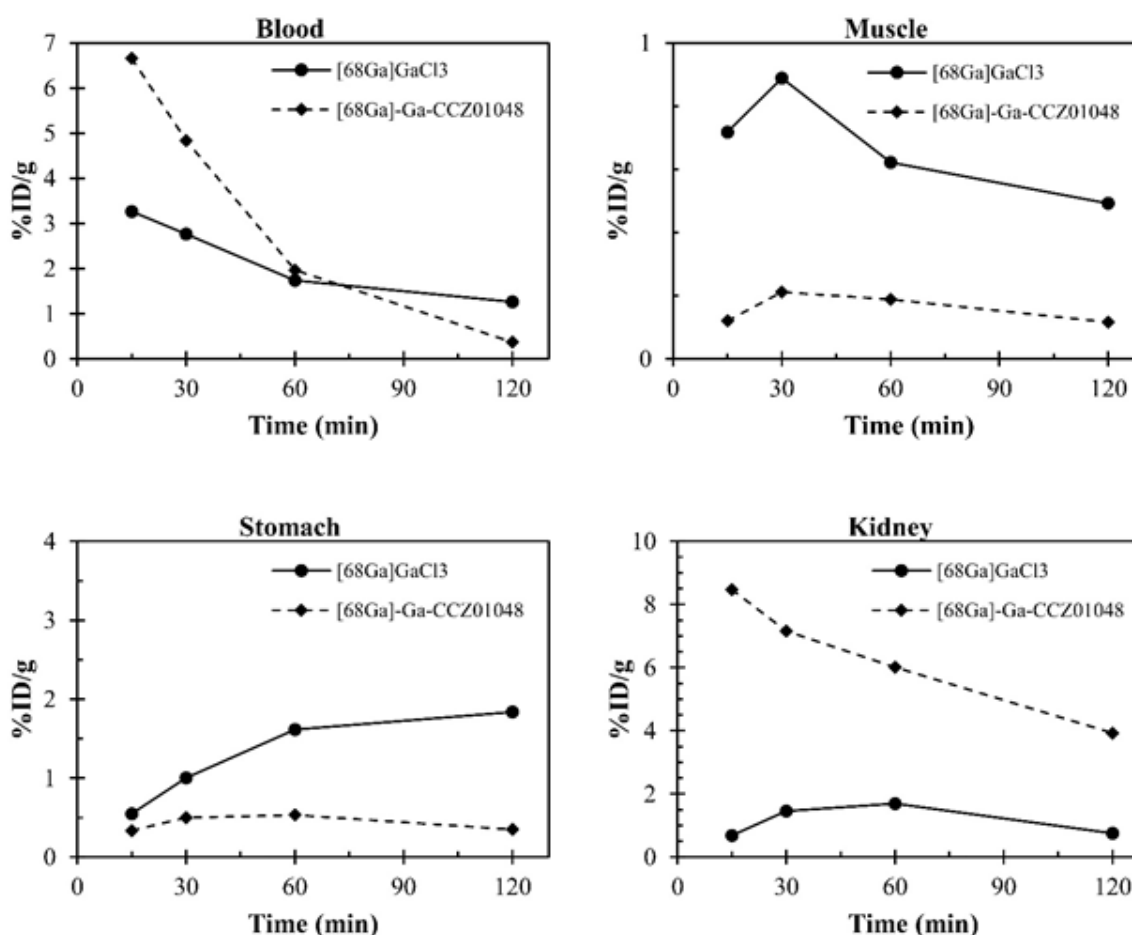


Figure 9. Comparative organ uptake of $[^{68}\text{Ga}]\text{GaCl}_3$ and $[^{68}\text{Ga}]\text{Ga-CCZ01048}$ in normal mice

CONCLUSION

The prevalence of melanoma in the country emphasizes the importance of early diagnosis of this disease. PET scanning is extremely sensitive for identifying metastatic malignant melanoma. Therefore, studies on radiopharmaceuticals targeting MC1Rs for melanoma imaging are necessary. Leading us to devote this research to the preparation and preclinical evaluation of $[^{68}\text{Ga}]\text{Ga-CCZ01048}$ radiopharmaceutical using an in-house $^{68}\text{Ge}/^{68}\text{Ga}$ generator hoping to pave the way for future clinical studies. $[^{68}\text{Ga}]\text{Ga-CCZ01048}$ was prepared with radiochemical purity more than 99% and specific activity of 118.4 TBq/mmol at optimized conditions. The preclinical results

support the potential of $[^{68}\text{Ga}]\text{Ga-CCZ01048}$ as a favorable agent for PET imaging of the metastatic malignant melanoma.

REFERENCES

1. Miller AJ, Mihm MC Jr. Melanoma. *N Engl J Med*. 2006 Jul 6;355(1):51-65.
2. Raposinho PD, Correia JD, Oliveira MC, Santos I. Melanocortin-1 receptor-targeting with radiolabeled cyclic α -melanocyte-stimulating hormone analogs for melanoma imaging. *Biopolymers*. 2010;94(6):820-9.
3. Miao Y, Quinn TP. Advances in receptor-targeted radiolabeled peptides for melanoma imaging and therapy. *J Nucl Med*. 2021 Mar;62(3):313-8.

- Kálmán-Szabó I, Bunda S, Lihi N, Szaniszló Z, Szikra D, Szabó Péliné J, Fekete A, Gyuricza B, Szücs D, Papp G, Trencsényi G, Kálmán FK. ⁶⁴Cu-Labelled radiodiagnostics of melanoma with NAPamide-targeted radiopharmaceutical. *Int J Pharm.* 2023 Feb 5;632:122527.
- Ahmed B, Qadir MI, Ghafoor S. Malignant melanoma: skin cancer-diagnosis, prevention, and treatment. *Crit Rev Eukaryot Gene Expr.* 2020;30(4):291-7.
- Zhang C, Lin KS, Bénard F. Molecular imaging and radionuclide therapy of melanoma targeting the melanocortin 1 receptor. *Mol Imaging.* 2017 Jan-Dec;16:1536012117737919.
- Domingues B, Lopes JM, Soares P, Pópulo H. Melanoma treatment in review. *Immunotargets Ther.* 2018 Jun 7;7:35-49.
- Zhang C, Zhang Z, Lin KS, Lau J, Zeisler J, Colpo N, Perrin DM, Bénard F. Melanoma imaging using ¹⁸F-labeled α -melanocyte-stimulating hormone derivatives with positron emission tomography. *Mol Pharm.* 2018 Jun 4;15(6):2116-22.
- Gai Y, Yuan L, Sun L, Li H, Li M, Fang H, Altine B, Liu Q, Zhang Y, Zeng D, Lan X. Comparison of Al¹⁸F- and ⁶⁸Ga-labeled NOTA-PEG₄-LLP2A for PET imaging of very late antigen-4 in melanoma. *J Biol Inorg Chem.* 2020 Feb;25(1):99-108.
- Zhang C, Zhang Z, Merkens H, Zeisler J, Colpo N, Hundal-Jabal N, Perrin DM, Lin KS, Bénard F. ¹⁸F-labeled cyclized α -melanocyte-stimulating hormone derivatives for imaging human melanoma xenograft with positron emission tomography. *Sci Rep.* 2019 Sep 19;9(1):13575.
- Rodriguez Rivera AM, Alabbas H, Ramjaun A, Meguerditchian AN. Value of positron emission tomography scan in stage III cutaneous melanoma: a systematic review and meta-analysis. *Surg Oncol.* 2014 Mar;23(1):11-6.
- Chung H, Lee JH, Jeong D, Han IO, Oh ES. Melanocortin 1 receptor regulates melanoma cell migration by controlling syndecan-2 expression. *J Biol Chem.* 2012 Jun 1;287(23):19326-35.
- Rosenkranz AA, Slastnikova TA, Durymanov MO, Sobolev AS. Malignant melanoma and melanocortin 1 receptor. *Biochemistry (Mosc).* 2013 Nov;78(11):1228-37.
- Yang H, Gao F, McNeil B, Zhang C, Yuan Z, Zeisler S, Kumlin J, Zeisler J, Bénard F, Ramogida C, Schaffer P. Synthesis of DOTA-pyridine chelates for ⁶⁴Cu coordination and radiolabeling of α MSH peptide. *EJNMMI Radiopharm Chem.* 2021 Jan 13;6(1):3.
- Holder JR, Haskell-Luevano C. Melanocortin ligands: 30 years of structure-activity relationship (SAR) studies. *Med Res Rev.* 2004 May;24(3):325-56.
- Froidevaux S, Calame-Christe M, Schuhmacher J, Tanner H, Saffrich R, Henze M, Eberle AN. A gallium-labeled DOTA- α -melanocyte-stimulating hormone analog for PET imaging of melanoma metastases. *J Nucl Med.* 2004 Jan;45(1):116-23.
- Cody WL, Mahoney M, Knittel JJ, Hruby VJ, Castrucci AM, Hadley ME. Cyclic melanotropins. 9. 7-D-Phenylalanine analogues of the active-site sequence. *J Med Chem.* 1985 May;28(5):583-8.
- Guo H, Yang J, Gallazzi F, Miao Y. Effects of the amino acid linkers on the melanoma-targeting and pharmacokinetic properties of ¹¹¹In-labeled lactam bridge-cyclized α -MSH peptides. *J Nucl Med.* 2011 Apr;52(4):608-16.
- Guo H, Gallazzi F, Miao Y. Gallium-67-labeled lactam bridge-cyclized α -MSH peptides with enhanced melanoma uptake and reduced renal uptake. *Bioconjug Chem.* 2012 Jun 20;23(6):1341-8.
- Morais M, Oliveira BL, Correia JD, Oliveira MC, Jiménez MA, Santos I, Raposinho PD. Influence of the bifunctional chelator on the pharmacokinetic properties of ^{99m}Tc(CO)₃-labeled cyclic α -melanocyte stimulating hormone analog. *J Med Chem.* 2013 Mar 14;56(5):1961-73.
- Wei W, Ehlerding EB, Lan X, Luo Q, Cai W. PET and SPECT imaging of melanoma: the state of the art. *Eur J Nucl Med Mol Imaging.* 2018 Jan;45(1):132-50.
- Guo H, Miao Y. Cu-64-labeled lactam bridge-cyclized α -MSH peptides for PET imaging of melanoma. *Mol Pharm.* 2012 Aug 6;9(8):2322-30.
- Nagy G, Dénes N, Kis A, Szabó JP, Berényi E, Garai I, Bai P, Hajdu I, Szikra D, Trencsényi G. Preclinical evaluation of melanocortin-1 receptor (MC1-R) specific ⁶⁸Ga- and ⁴⁴Sc-labeled DOTA-NAPamide in melanoma imaging. *Eur J Pharm Sci.* 2017 Aug 30;106:336-44.
- Zhang C, Zhang Z, Lin KS, Pan J, Dude I, Hundal-Jabal N, Colpo N, Bénard F. Preclinical melanoma imaging with ⁶⁸Ga-labeled α -melanocyte-stimulating hormone derivatives using PET. *Theranostics.* 2017 Feb 8;7(4):805-3.
- Khan MU, Khan S, El-Refaie S, Win Z, Rubello D, Al-Nahhas A. Clinical indications for Gallium-68 positron emission tomography imaging. *Eur J Surg Oncol.* 2009 Jun;35(6):561-7.
- Burke BP, Archibald SJ. Labeling with Gallium-68. Scott P, Kilbourn M, editors. *Handbook of radiopharmaceuticals: methodology and applications.* 1st ed. John Wiley & Sons. 2020 Dec 21. P. 291-323.
- Ghoncheh M, Koohi F, Salehiniya H. Epidemiology and trend of skin cancer incidence in southern Iran. *J Dermatol Cosmet.* 2015 Jul 10;6(2):85-92.
- Farhood B, Geraily G, Alizadeh A. Incidence and mortality of various cancers in Iran and compare to other countries: a review article. *Iran J Public Health.* 2018 Mar;47(3):309-16.
- Pakzad R, Soltani S, Salehiniya H. Epidemiology and trend in skin cancer mortality in Iran. *J Res Med Sci.* 2015 Sep;20(9):921.
- Afzali M, Mirzaei M, Saadati H, Mazloomi-Mahmood-Abadi SS. Epidemiology of skin cancer and changes in its trends in Iran. *Fez Med Sci J.* 2013 Nov 1;17(5): 501.
- Keyghobadi N, Rafiemanesh H, Mohammadian-Hafshejani A, Enayatradd M, Salehiniya H. Epidemiology and trend of cancers in the province of Kerman: southeast of Iran. *Asian Pac J Cancer Prev.* 2015;16(4):1409-13.
- Sharifi M, Yousefnia H, Bahrami-Samani A, Jalilian AR, Zolghadri S, Alirezapour B, Geramifard P, Maus S, Beiki D. Optimized production, quality control, biological evaluation and PET/CT imaging of ⁶⁸Ga-PSMA-617 in breast adenocarcinoma model. *Radiochim Acta.* 2017 May 1;105(5):399-407.
- Karimkhani S, Yousefnia H, Faghihi R, Gramifard P, Parishan MR. Calculation of Gallium-68 dose factors for [⁶⁸Ga] DOTATATE injected patients: a comparison with OLINDA Database. *J Nucl Sci Appl.* 2022; 2(2):30-40.
- Yousefnia H, Zolghadri S, Jalilian AR. Absorbed dose of human organs after injection of ⁶⁸Ga-EDTMP: estimation from biodistribution data in wild-type rats. *Fron Biomed Technol.* 2018 Dec 30;5(3-4):63-8.
- Zolghadri S, Badipa F, Amraee N, Alirezapour B, Beiki D, Yousefnia H. Development and evaluation of [⁶⁴Cu] Cu-DOTATATE for clinical applications. *Iran J Nucl Med.* 2023 Jul 1;31(2):157-66.